

# Get ready and vote in the Port Waikato by-election

## The Easy Read guide to voting



Developed with input from  
People First New Zealand, Ngā Tāngata Tuatahi



## About this booklet



This booklet has information about how to enrol and vote in the Port Waikato by-election.



# About elections



People in New Zealand vote for the people and parties who will:

- be in Parliament
- make decisions that affect your life.

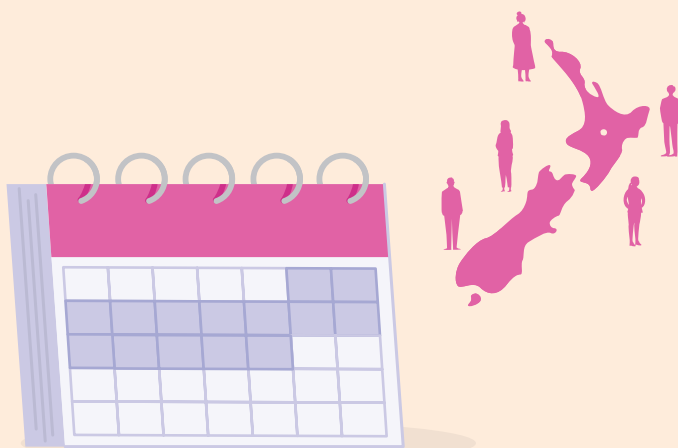
**Parliament** is all the people and parties who have been chosen in the election.

Some of the parties in Parliament form the **Government**.



The **New Zealand Government** decides on things that affect your life like:

- schools
- hospitals
- roads.



Usually all of New Zealand chooses all the people who will be in Parliament on the same day.

This is called a **general election**.

# About by-elections



The person who represents your local area in Parliament is called a **member of Parliament**.

A **candidate** for the **Port Waikato** electorate died before election day at the 2023 General Election.

This means there needs to be a member of Parliament for **Port Waikato** chosen.



**Candidates** are people who:

- stand for election
- **campaign** to get people to vote for them

**Campaigning** means candidates:

- tell people what they want to do if they get into Parliament
- ask people to vote for them



To choose a new MP a kind of election called a **by-election** is held.

If you are enrolled in the Port Waikato electorate you can vote in the by-election.

Your local area is called an **electorate**.

# About choosing who to vote for



It is your choice who you want to vote for in a by-election.

**Nobody is allowed to tell you who to vote for.**



Here is a list of where you could find more information to help you choose who to vote for:

- newspaper
- television
- radio
- public meetings
- your friends
- your family.



You have 1 vote in a by-election.

You can vote for the person you want to be your member of Parliament.

This is different to a general election where you vote for a party as well as a person.

# About getting enrolled to vote

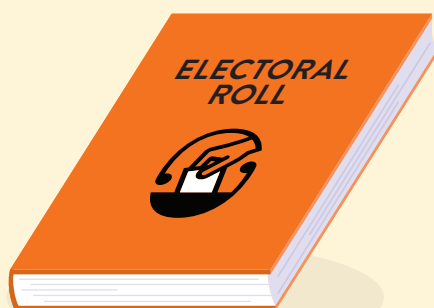


You have to be enrolled to vote in a by-election.

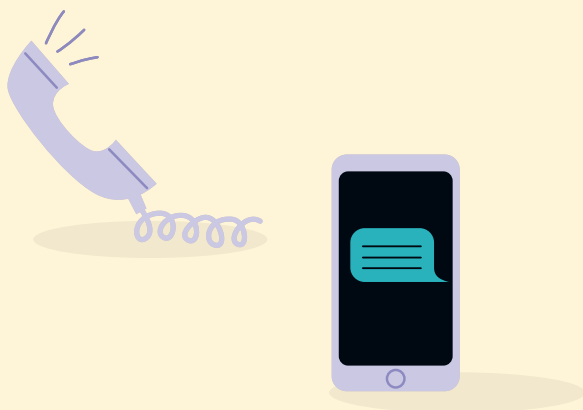
It is easy to:

- enrol to vote
- check your information
- update your information like your address.

When you enrol your name will go on the **electoral roll**.

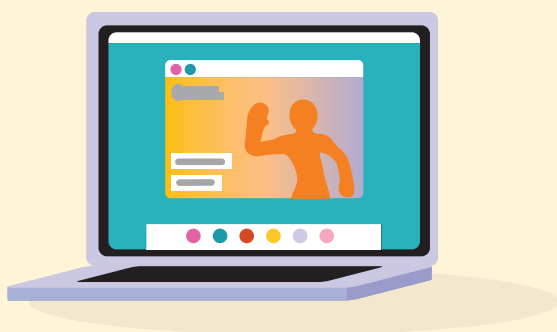


The **electoral roll** is the list of all the people who have enrolled to vote.



To get an enrolment form you can:

- call **0800 36 76 56**
- text your name and address to **3676**
- visit **vote.nz**.

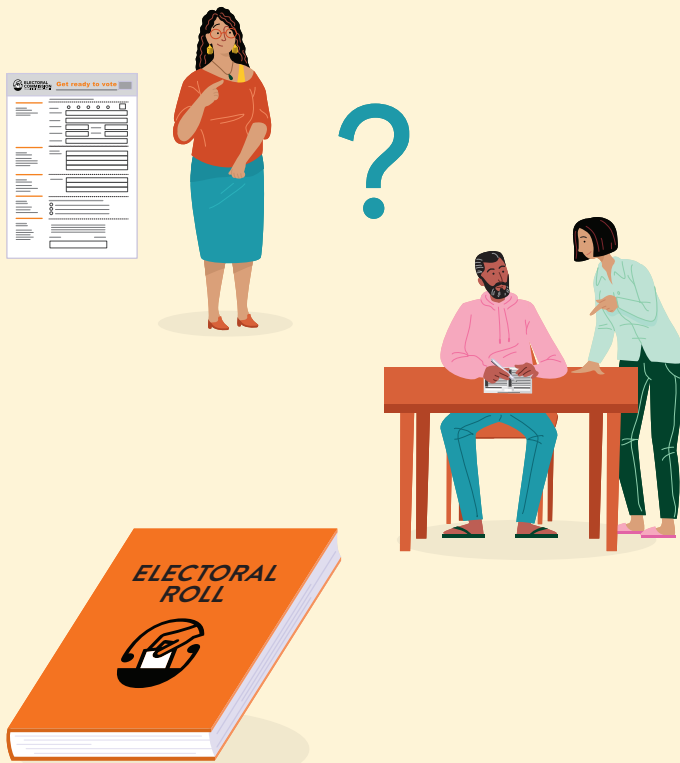


You can also enrol online at **vote.nz**

To enrol online you will need to use your:

- New Zealand driver licence or
- New Zealand passport or
- RealMe verified identity.

# About getting enrolled to vote

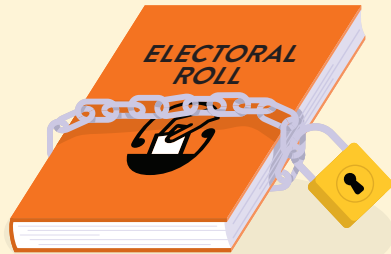


The enrolment form will ask for information about you.

It is important to put the right information on the enrolment form.

If you need assistance to put your information on the enrolment form ask someone to support you.

After you have enrolled to vote your name will go on the electoral roll.



If you are worried about your safety if your name goes on the electoral roll you can ask to go on the **Unpublished Roll**.

Your personal details will not be given to anyone.

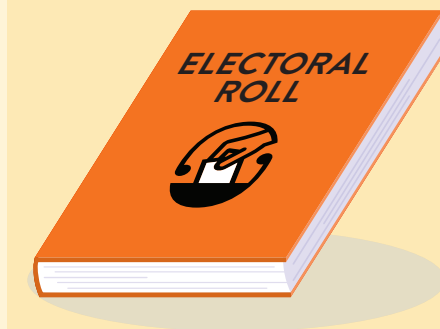


You must update your information on the electoral roll if you:

- move to a different place
- change your name.



# Who can get enrolled to vote?



In New Zealand you must **enrol to vote** if you:

- are 18 years or older and
- have lived in New Zealand for more than one year at some time in your life and
- are a New Zealand citizen or permanent resident of New Zealand.



You can enrol to vote any time:

- before election day
- on election day.

You can also enrol at a voting place when you go to vote.

# About how you can vote in the Port Waikato by-election



**Election day** is the date when the election happens.

You can vote:

- on election day which is **25 November**
- before election day

Voting places are open from **13 November until 25 November.**

You can vote at any voting place in the electorate.

There will be someone at the voting place to show you what to do.



Do your best to enrol early.

If you enrolled on or before **14 October** you will get an information pack in the mail.

The information pack will arrive about a week before voting starts.

The information pack has:

- your EasyVote card
- when to vote
- a list of people to choose from
- a list of voting places and the times they are open.

# About how you can vote in a by-election



When you go to a voting place take your **EasyVote card** with you.

Give your EasyVote card to the person that works at the voting place.

You can vote without an EasyVote card but it will take longer.



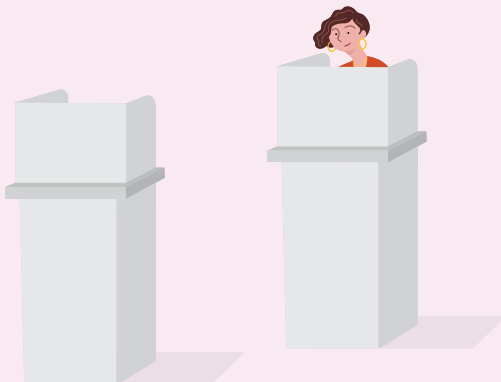
If you do not have an EasyVote card you will have to tell the person who works at the voting place you:

- full name
- address.



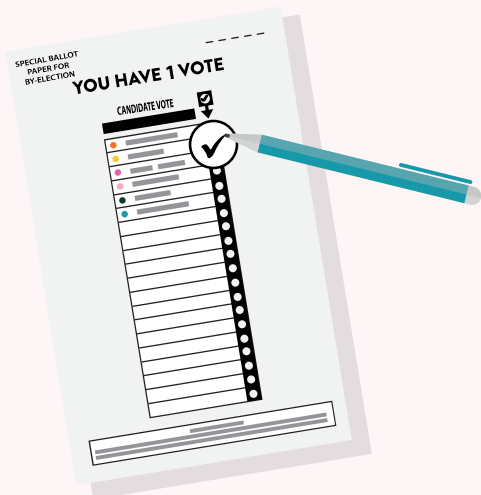
The person who works at the voting place will:

- find your name on the electoral roll
- put a line on the electoral roll to show you have voted
- give your voting paper to you.



After you get your voting paper take it behind the voting screen.

# How to cast your vote



You have 1 vote.

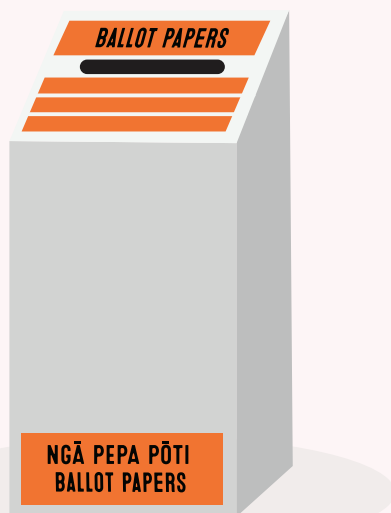
It is for the candidate you want to be your local member of Parliament.

On your voting paper put a tick by the name of the person you want to represent your local area in Parliament.



After you have finished marking your voting paper:

- fold it in half
- put your voting paper for the by-election in the voting box.



Election workers at the voting place will show you what to do.

# Voting support



You can get support to vote from a:

- friend
- person in your family
- person who works at the voting place.



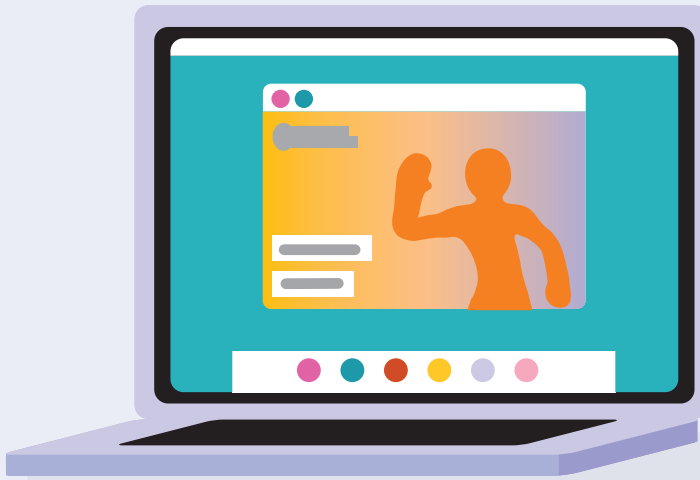
A support person is allowed to:

- go with you behind the voting screen
- read out loud the words on the voting paper
- tick the voting paper if you ask them to.



A support person is not allowed to tell you who to vote for.

## More information about by-elections



To get more information about how to enrol and vote in a by-election

- visit **vote.nz**
- call **0800 36 76 56**.



If you find it hard to use the phone the **New Zealand Relay service** is for people who:

- are Deaf / hard of hearing
- are deafblind
- speech impaired / find it hard to talk.

You can find out more about the New Zealand Relay service at:

**[www.nzrelay.co.nz](http://www.nzrelay.co.nz)**

## **If you cannot get to a voting place**

If it is too hard for you to get to a voting place there are still ways you can vote.

If you are in a care home the person running the election will work with the person in charge of your care home to make sure everyone can vote.

If you are in hospital a family or friend can bring you your voting paper.

We can assist you to vote if you cannot get to a voting place.

This might be because:

- you are ill
- you find it hard to move around

To find out more about how we can support you:

- visit **vote.nz**
- call **0800 36 76 56**



34-42 Manners Street,  
PO Box 3220, Wellington 6140.